



# DIAMOND *Professional*

Diamond Professional develops emergency and operating room equipment, as well as disinfection products, and has an entire line of adaptable laboratory products compliant to industry standards.



**THE DIAMOND GROUP**

MANUFACTURING EXCELLENCE SINCE 1932



**Diamond Professional** is focused on supplying and designing healthcare, laboratory, and mortuary equipment. Fabricated from high quality stainless material, Diamond offers a variety of industry specific products such as operating room cabinets, scrub stations, sink modules, autopsy tables, and grossing stations.

  
**DIAMOND**  
*Professional*

MANUFACTURING EXCELLENCE SINCE 1932

[diamond-group.com](http://diamond-group.com)  
Toll free 1 800-363-5926

# SINK MODULES



## INSTRUMENT CLEAN-UP STATION

### SPECIFICATIONS

#### Application

Five sink module designed to provide multiple functions such as pre-rinsing, soaking, washing, and flushing of materials prior to the washing and decontamination process. Adequate counter space and storage areas are provided as well as an air gun for pre-cleaning and drying.

#### Construction

Top constructed 16 ga, 304 stainless steel with 4" (102 mm) backsplash reinforced with steel channels with sound deadening undercoating.

Top has a die forming marine edge on 1/8" (3 mm) on 3 sides.

Sink bowls are radius-coved and integrally welded.

Sinks shall be welded into countertop. Ground smooth and polished.

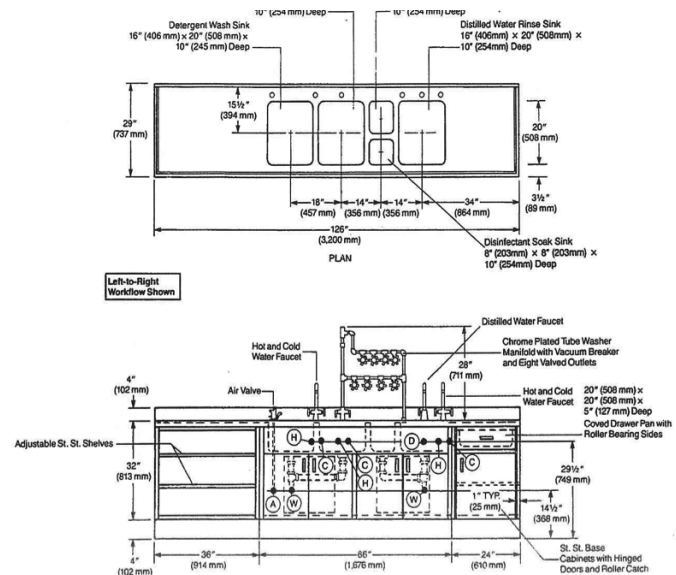
Under structure including cabinets and shelving shall be constructed of 18 ga stainless steel. The centre area will be enclosed by 5 hinged doors. Open base cabinet is complete with 2 adjustable stainless steel and fixed bottom shelf.

#### Std Plumbing

- Two (2) lab grade hot / cold water gooseneck faucets
- One (1) distilled water faucet
- Tubing manifold assembly. With eight (8) valve hose codes and vacuum breaker/bleeder valve for flushing
- Duplex waste assemblies with stainless steel overflows



Constructed of 300 series stainless steel  
Available in various sizes and modular configurations  
Recessed or with pedestal base  
Various options available



Need CUSTOM-MADE to your specifications? Call to inquire 1 800 363-5926



# STORAGE CABINETS

## EQUIPMENT STORAGE CABINETS



### SPECIFICATIONS

#### Application

Cabinets are designed to meet the needs of the O.R. in terms of supplies, medications, instrumentation, and apparatus.

#### Construction

Supply cabinet is constructed of 18 ga stainless steel 304 #4 finish. All joints are fully welded and ground polished doors are double-pane glazed, made of thick safety plate glass tempered. Doors are hung on three semi-concealed stainless steel hinges and equipped with pull handles and spring loaded nylon roller catches.



Constructed of 300 series stainless steel  
Available in various sizes and modular configurations  
Recessed or with pedestal base  
Various options available

Need CUSTOM-MADE to your specifications? Call to inquire 1 800 363-5926



# WARMING CABINETS



## FULL SIZE WARMING CABINET

### SPECIFICATIONS

#### Application

Diamond Surgical's Blanket and Solution Warming Cabinets are designed to provide heated storage for patient blankets, solutions, and fluids. Engineered to provide evenly distributed warm air rapidly throughout the entire cabinet. A full load of product at room temperature will reach the factory pre-set temperature at 45°C / 113°F in a pre-warmed cabinet within seven hours.

#### Construction

All cabinet bodies and interior components are fully welded stainless steel with a #4 polished finish. Cabinet bodies are fully insulated with high-temperature non-combustible insulation with an R-6 rating.

Electrical chases are ventilated by a fan system to ensure proper temperature of internal components. Cabinets are free-standing and come complete with adjustable levelling feet. Cabinet doors are fully insulated stainless steel with a reversible hinge/handle feature (for left or right opening configurations). The door and cabinet frame are sealed using a high-temperature rubber gasket to provide a guaranteed air tight seal and prevent the possibility of heat loss. Interior Shelves are perforated stainless steel providing maximum load capacity and even heat distribution. Shelves are fully height adjustable and can be extended by 50% of the cabinet interior depth. All shelves are designed with fully welded retainers and stops to prevent tipping when in the extended position. Shelving is inter-changeable with other Warming Cabinets of similar depth. All Full Size Warming Cabinets are available as free standing units or a optional recessed configurations.

#### Temperature Control

Temperature setting is controlled by a microprocessor based thermostat complete with an easily readable digital gauge to monitor cabinet interior temperature. Temperature setting and display are accurate to within plus/minus 1.5°C / 2.7°F. All cabinets are equipped with a high-temperature overload protector which will disconnect all power to the cabinet should an electrical malfunction occur. A high-temperature warning light is also provided should the cabinet temperature exceed 6°C / 10°F of the pre-selected setting.



Constructed of 300 series stainless steel  
Built to store blankets and solutions at ideal temperatures  
Even heat circulation  
Available as Floor or Recessed models

Need CUSTOM-MADE to your specifications? Call to inquire 1 800 363-5926



# WARMING CABINETS

## COUNTER MODEL WARMING CABINET

### SPECIFICATIONS

#### Application

Diamond Surgical's Blanket and Solution Warming Cabinets are designed to provide heated storage for patient blankets, solutions, and fluids. Engineered to provide evenly distributed warm air rapidly throughout the entire cabinet. A full load of product at room temperature will reach the factory pre-set temperature at 45°C / 113°F in a pre-warmed cabinet within seven hours.

#### Construction

All cabinet bodies and interior components are fully welded stainless steel with a #4 polished finish. Cabinet bodies are fully insulated with high-temperature non-combustible insulation with an R-6 rating. Electrical chases are ventilated by a fan system to ensure proper temperature of internal components. Cabinets are free-standing and come complete with adjustable levelling feet. Cabinet doors are fully insulated stainless steel with a reversible hinge / handle feature.(for left or right opening configurations). The door and cabinet frame are sealed using a high-temperature rubber gasket to provide a guaranteed air tight seal and prevent the possibility of heat loss. Interior shelves are perforated stainless steel providing maximum load capacity and even heat distribution. Shelves are full height adjustable and can be extended by 50% of the cabinet interior depth. All shelves are designed with fully welded retainers and stops to prevent tipping when in the extended position. Shelving is inter-changeable with other Warming Cabinets of similar depth. All Counter Model Warming Cabinets are available as free standing units or a optional recessed configurations.

#### Temperature Control

Temperature setting is controlled by a microprocessor based thermostat complete with an easily readable digital gauge to monitor cabinet interior temperature. Temperature setting and display are accurate to within plus/minus 1.5°C / 2.7°F. All cabinets are equipped with a high-temperature overload protector which will disconnect all power to the cabinet should an electrical malfunction occur. A high-temperature warning light is also provided should the cabinet temperature exceed 6°C / 10°F of the pre-selected setting.



Constructed of 300 series stainless steel  
Built to store blankets and solutions at ideal temperatures  
Even heat circulation  
Space-saving counter model

**Need CUSTOM-MADE to your specifications? Call to inquire 1 800 363-5926**

# SINK MODULES



## SURGICAL SCRUB SINKS

### SPECIFICATIONS

#### Application

Surgical scrub sinks are designed to provide pre-selected tempered water whether using count-stroke or timed scrub methods, completely eliminating contact between operating personnel's hands and the now sterile sink and faucet.

#### Construction

16ga stainless steel sink bowl is continuous for one, two, or three bay models with central drain. All exterior panels are 304 stainless steel #4 finish welded ground and polished. Interior slope design has been engineered to minimize splashing of soiled water and facilitate drainage. All inside corners are coved for ease of cleaning. The water side of the bowl is sound deadened.

#### Manual Scrub Sink

Requires no electrical service for operation. Press and release knee panel labelled water to open water valve and start flow of water. Press and release panel again to stop the water flow. Each manual sink is equipped with digital timer. When the water valve is closed, the timer will turn off and reset to zero for the start of a new scrub session.

#### Electric Scrub Sink

Equipped with electric water valve and digital timer. When electric water valve is opened the digital timer will start counting up in seconds – minutes and can be used to time the duration of a scrub session. When the water valve is closed the timer will turn off and reset to zero for the next scrub session.



Fully Covered and polished construction  
Electrical or Manual models  
Floor or Wall Mount applications  
Conforms to NSF & UL industry standards

#### Standard Sizes

##### DSS-1: One Bay

32" L X 25" W X 54 ¾" H

813 mm x 635 mm x 1391 mm

##### DSS-2: Two Bay

63" L X 25" W X 54 ¾" H

1600 mm x 635 mm x 1391 mm

##### DSS-3: Three Bay

94" L X 25" W X 54 ¾" H

2388 mm x 635 mm x 1391 mm

Need CUSTOM-MADE to your specifications? Call to inquire 1 800 363-5926



# AUTOPSY TABLES



## AUTOPSY TABLE

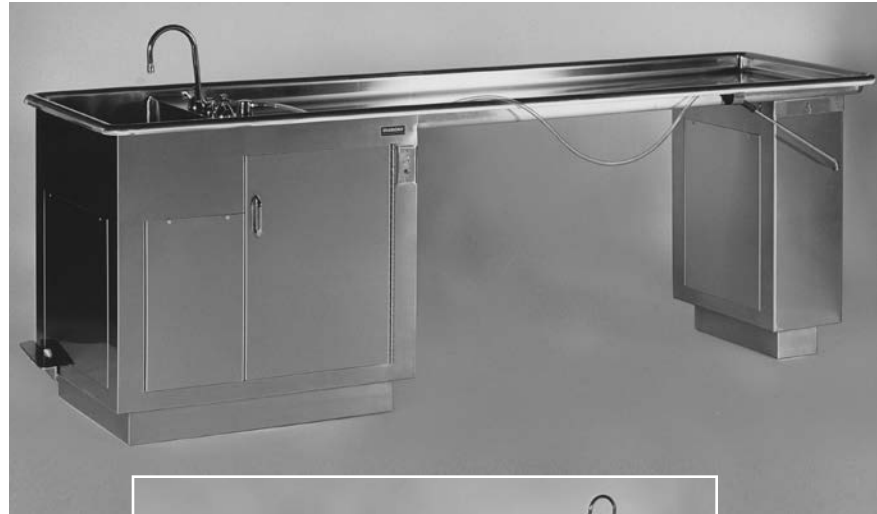
### SPECIFICATIONS

#### Application

Diamond Autopsy Tables are high quality stainless steel tables, counter, and sink units. Our Autopsy Tables have been designed for the functional requirements of an Autopsy laboratory. For over 50 years, these tables have evolved into the industry standard for this application. Diamond products can be found in almost every hospital, mortuary, and crematorium and can be configured for your unique requirements.

#### Construction

Autopsy Tables are constructed with built-in sink fabricated of No.14 gauge stainless steel for top and sinks and 20 gauge in cabinets, welded ground and polished to one-piece, coved-corner construction. They have a top working surface left of sink which shall be pitched to separate waste. Sink is complete with hot and cold water faucets operated by wrist blades, gooseneck spout, vacuum breakers and lever-action waste control with overflow. Adjacent to the faucet is a hydro aspirator for both suction and flushing use with built-in vacuum breaker. Rubber headrest is standard. Autopsy Tables feature a rubber cutting board with stainless steel legs to allow flushing underneath with bumpers to keep board steady. Six stainless steel slats in top are easy to remove. Stainless steel perforated cover provides for waste on both the dissecting table and the autopsy table. Contains two deep coved-cornered sinks with standing overflow pipe for one sink. Disposal is available for one sink bowl and there is a dry work area for accessories and preparation of specimens. Autopsy Tables have a right-hand pedestal base that contains an aspirator, irrigation and thermostatic mixing valves. Suction and irrigation hoses are located under the top front edge with all fittings, piping, and hardware chrome-plated. The suction hose is powered by a water aspirator with reversing valve for cleaning. The gas cock is chrome-plated and the continuous flushing system eliminates cleaning problems. Drawers and cabinets are provided for storage of instruments, plastic bags, saws, etc. Cabinet and drawers are coved-corners, and drawers are to be easily removable for cleaning. The table is constructed entirely of stainless steel and has coved corners in all working areas for ease of cleaning and sanitation.



Constructed of 300 series stainless steel  
Coved corner construction  
Optional base and sink configurations

#### Standard Sizes

#### Autopsy Tables

100" L X 34" W X 32 H"

2540 mm x 864 mm x 813 mm

Need CUSTOM-MADE to your specifications? Call to inquire 1 800 363-5926





# NARCOTIC CABINETS



## MEDICATION CABINET

### SPECIFICATIONS

#### Application

Designed for secure mounting inside an existing cabinet or on the wall. Stainless steel construction provides extended product life, facilitates cleaning and supports sterile storage. Cabinets available in single or double door configurations with a variety of locking systems available. Optional warming light systems. Custom cabinet designs available to suit user specified applications.

#### Construction

Heavy gauge Series 300 stainless steel construction throughout, fully welded and polished to a #4 blended finish. Doors are permanently secured with a full length piano hinge assembly welded to the cabinet body and include a standard heavy duty flush mount cam lock assembly individually keyed.

Cabinet includes one fixed height stainless steel shelf, additional height adjustable shelf systems available. Optional features include two and three position door lock assembly on the outer door for larger cabinet designs and warning light systems.

All surfaces of unit shall be constructed of polished stainless steel.

Refrigerator in lower left cabinet with hinged door, continuous magnetic gasket, stainless steel interior and three removable wire shelves. Refrigerator equipped with automatic defrost and integral drain. 1/8 h.p. air cooled compressor in lower middle section of cabinet. Refrigerator system factory charged for immediate operation. Two separate double locked storage area in upper left side of unit for safe keeping of narcotics. Storage section with three removable and adjustable shelves on upper right side of unit for miscellaneous medications.

Two drawers in middle of lower section for storage of syringes, etc. Drawer unit in back splash for tissue paper.



Convenient Medication Station combining storage, refrigeration, water, and working space  
Ideal for Hospitals, Seniors Residences,  
and Rehabilitation Homes

Need CUSTOM-MADE to your specifications? Call to inquire 1 800 363-5926



# REFRIGERATORS



## MORTUARY REFRIGERATORS

### SPECIFICATIONS

#### Application

Fold-down door includes two positive latching devices; door-suspension mechanism holds door open at 90° angle. Stainless steel interior floor.

#### Construction

Self-contained or remote mechanical systems for Roll-In and End-Opening Combination models. 20-gauge, polished stainless steel front. Interior walls, ceilings and top are constructed of stucco embossed aluminum. Stainless steel interior floor. Stainless steel door interior pan resists dents, punctures and marking. Galvanized steel, three-piece telescopic tray carriage and frame assembly with cadmium-plated ball bearing rollers provide smooth, full-extension operation. Handle-release system helps ensure safe operation. Removable, one-piece, polished stainless steel body trays (MT1) with a hand hold at each end. 4-inch (101 mm) thick, expanded polystyrene insulation. Concealed anti-sweat perimeter heaters surround each door opening to prevent condensate build up.

Stainless steel grille for easy access to mechanical section (self-contained models only). Extruded vinyl door gasket features welded corners to provide air-tight seal. Unit cooler features automatic off-cycle defrost. Automatic condensate evaporator on some models. Heavy-duty, commercial-grade hardware. Each door fitted with body tag holders.

#### Options

- Pass-through configuration (not available for Side-Opening models)
- One-Body Morgue Cart for Roll-In and Combo-Units
- Wider doors on Roll-In and Combination Units to accommodate mobile autopsy tables
- Stainless steel interior and exterior
- Stainless steel trim enclosure panels
- Other finishes available
- Opposite door swing (right-hand standard)
- Temperature monitoring system
- Water-cooled condensing unit (indoor system only)
- Dual mechanical 100 percent back up with auto-switchover system
- Freezer application



Constructed of 300 series stainless steel  
Self contained refrigeration system  
Stainless steel interior floor

Need CUSTOM-MADE to your specifications? Call to inquire 1 800 363-5926



# WINDOWS

## PASS-THRU WINDOWS

### SPECIFICATIONS

#### Application

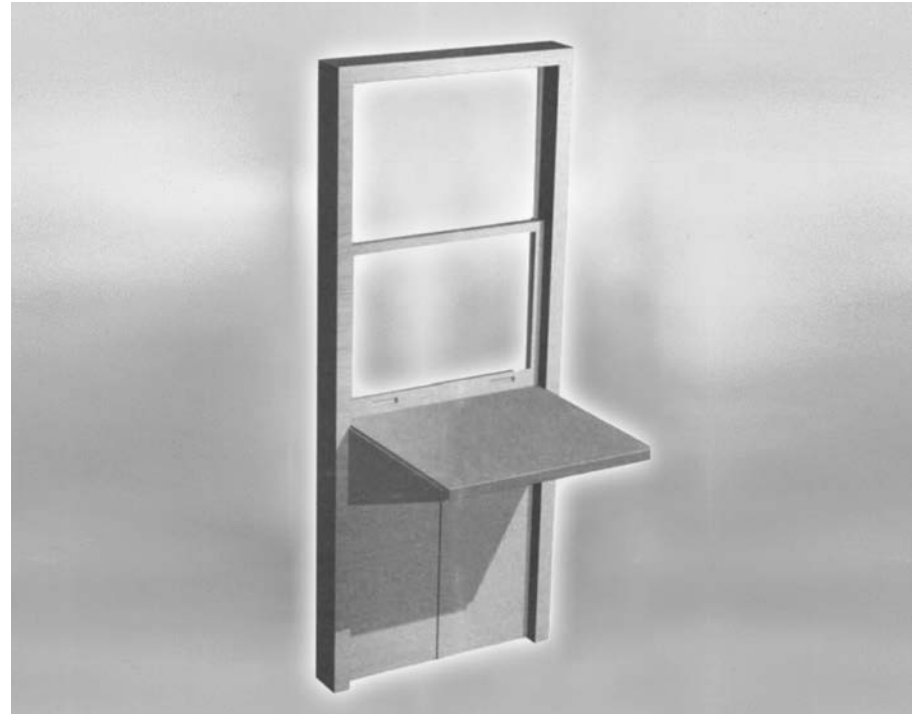
Pass-thru allows the transfer of decontaminated items to the terminal processing area. A height adjustable window and level counter allow for easy movement of items to the sterile area for further preparation and packing. The return Door Assembly facilitates the processing of empty racks and rack dollies to the decontamination area once sterile processing is complete. Pass-Through Assemblies are custom designed to suit user specified rough opening dimension.

#### Construction

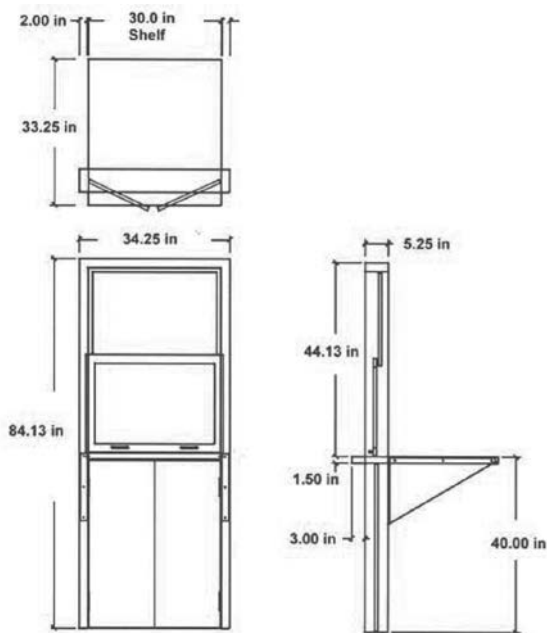
16 ga, 304 stainless steel, fully welded and polished to #4 finish. Window is 1/4" thick tempered safety glass.

Design components are mounted inside a self-contained perimeter frame assembly.

Opening is 34" wide, 17" high. A stainless steel counter for screening and holding manually cleaned items and two 92" rack return doors to allow for easy rack, dolly, and cart passage.



Double hung laminated safety glass framed in 300 series stainless steel  
Mounted inside a self-contained perimeter frame assembly  
Allows transfer between the decontamination and sterile processing areas



### Standard Sizes

#### Frame

34 1/4" L in x 51 1/4" W x 84 1/8" H

870mm x 133mm x 2137mm

#### Counter

30" L in x 33 1/4" W x 11 1/2" H

762 mm x 845 mm x 38 mm

Need CUSTOM-MADE to your specifications? Call to inquire 1 800 363-5926

# CASE CARTS

## SURGICAL CASE CARTS

### SPECIFICATIONS

#### Application

Surgical case carts offer the most efficient method of transporting supplies, instruments and specialty equipment to and from the operating room. Standard features for the closed and open case carts include: generous storage area for a variety of items as well as a comfortable working height. The carts can also serve as a back table for instruments and supplies in the operating room. All surgical case carts are durable and are of welded stainless steel construction.

#### Construction

Paddle latches assure ease of opening.

Positive door keepers secure doors to side of cart for convenient access to contents.

All stainless steel welded construction for extreme durability and easy cleaning. Shelving adjustable on 7 inch centres.

Tilted base shelf that drains away residual water and dirt.

Heavy-duty fully encircling bumpers for maximum protection.

Perforated pan shelves are standard. Stainless steel wire shelving is optional.

Easy rolling, 5 inch diameter conductive casters with ball-bearing swivels and swivel locks.

Heavy-duty door hinges.



Constructed of 300 series stainless steel  
Non-marking polyurethane ball bearing casters  
Removable doors to facilitate cleaning  
Perimeter rubber bumper

Need CUSTOM-MADE to your specifications? Call to inquire 1 800 363-5926